



5-7 Moor Lane, Liverpool, L23 2SE

£850 PCM

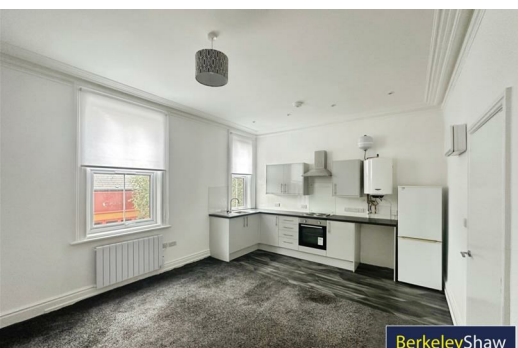
Nestled in the charming Crosby Village, this beautifully refurbished apartment on Moor Lane offers a delightful blend of modern living and comfort. The property features a spacious reception room, perfect for entertaining guests or enjoying a quiet evening in. With two well-proportioned bedrooms, this apartment is ideal for couples, or individuals seeking a stylish yet practical living space.

The bathroom has been thoughtfully designed, ensuring both functionality and a touch of elegance. The refurbishment has brought a fresh and contemporary feel to the apartment, making it a welcoming retreat for its new occupants.

Crosby is known for its vibrant community and proximity to local amenities, including shops, parks, and excellent transport links, making it a convenient choice for those commuting to Liverpool city centre or beyond.

This apartment presents a wonderful opportunity for anyone looking to settle in a desirable location with a modern touch. Don't miss the chance to make this lovely property your new home.

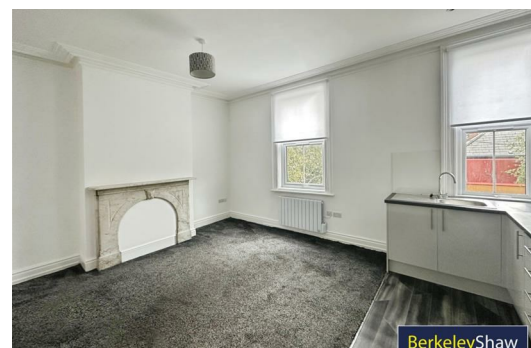
Deposit: £980
Council Tax Band:
Minimum Term: 12 Months



BerkeleyShaw



BerkeleyShaw



BerkeleyShaw

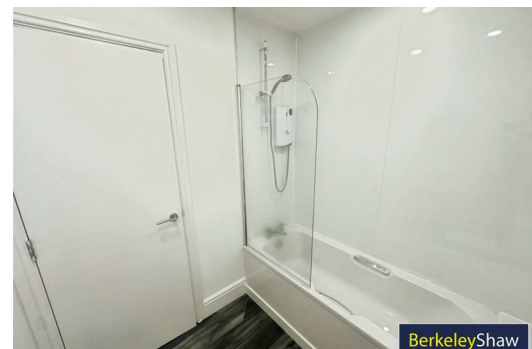
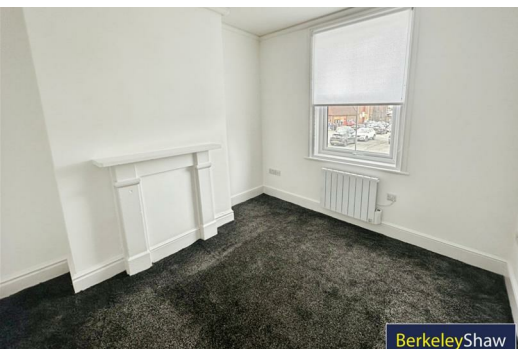
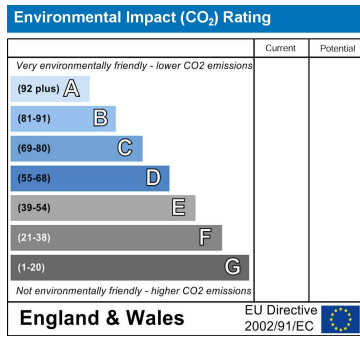
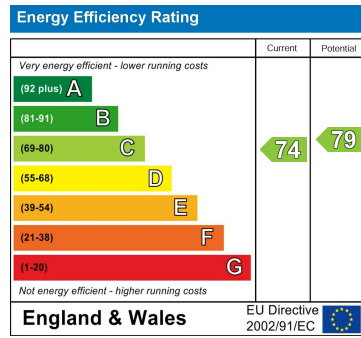
Hallway

Open Plan Lounge Kitchen

Bedroom 1

Bedroom 2

Bathroom



Berkeley Shaw Estate Agents Limited.
Company No. 0784754

Berkeley Shaw Real Estate Limited.
Company No. 05206927

